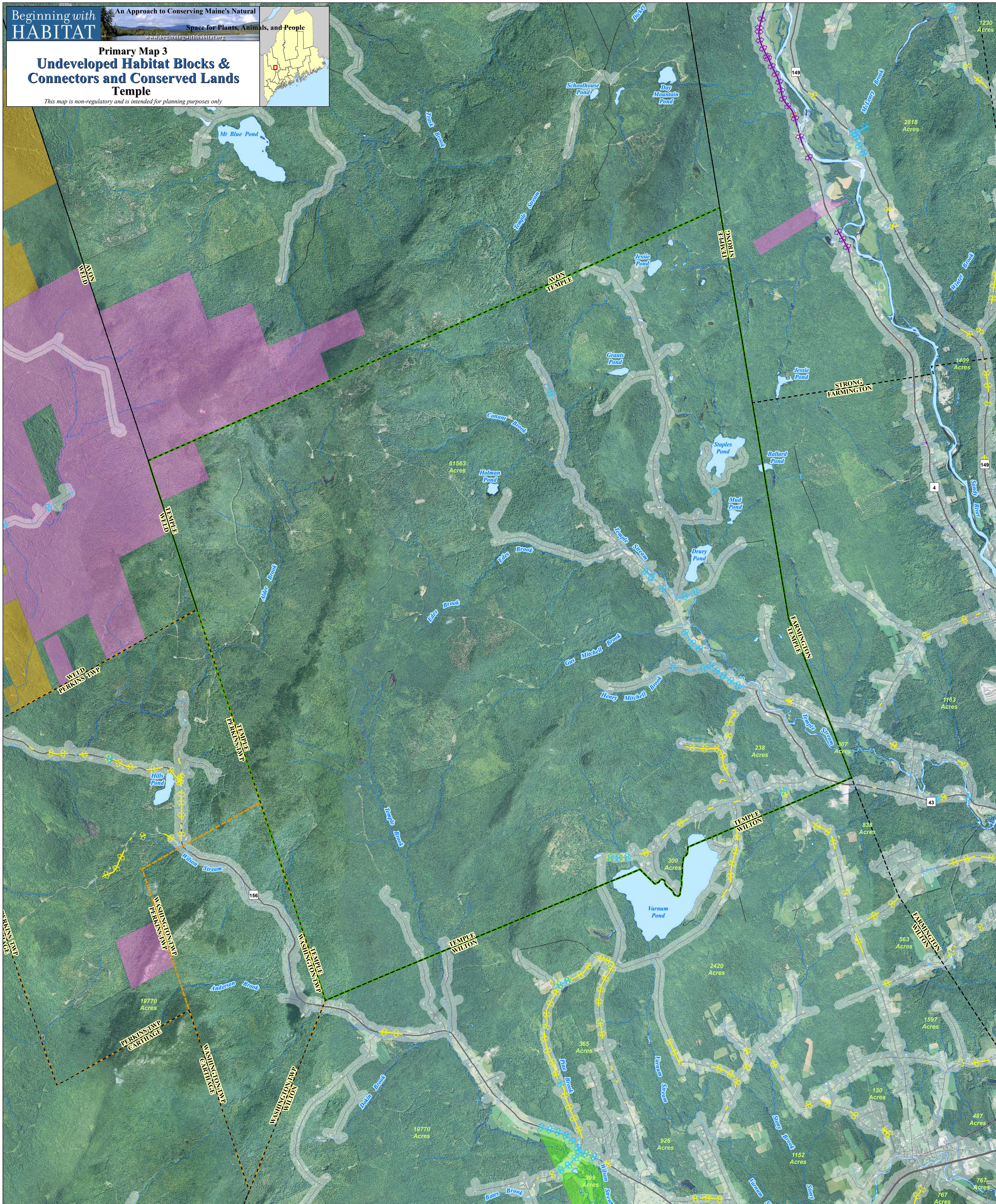


Beginning with  
**HABITAT**

An Approach to Conserving Maine's Natural  
Space for Plants, Animals, and People  
[www.beginningwithhabitat.org](http://www.beginningwithhabitat.org)

Primary Map 3  
**Undeveloped Habitat Blocks &  
Connectors and Conserved Lands  
Temple**

This map is non-regulatory and is intended for planning purposes only



**LEGEND**

This map highlights undeveloped natural areas likely to provide core habitat blocks and habitat connections that facilitate species movements between blocks. Undeveloped habitat blocks provide relatively undisturbed habitat conditions required by many of Maine's species. Habitat connections provide necessary opportunities for wildlife to travel between preferred habitat types in search for food, water, and mates. Roads and development fragment habitat blocks and can be barriers to moving wildlife. By maintaining a network of interconnected blocks towns and land trusts can protect a wide variety of Maine's species—both rare and common—to help ensure rich species diversity long into the future. Maintaining a network of these large rural open spaces also protects future opportunities for forestry, agriculture, and outdoor recreation.

Organized Township Boundary

Unorganized Township

Selected Town or Area of Interest

**Habitat Blocks**

Development Buffer (pale transparency)  
250-500 foot buffer around improved roads and developed areas based on development intensity.

Undeveloped Habitat Block  
Remaining land outside of Development Buffers. Blocks greater than 100 acres are labeled with their estimated acreage.

**Approximate Road Crossing Habitat Connections**

Represented habitat connections identified through computer modeling highlight locations where quality habitat is likely to occur on both sides of a given road between undeveloped habitat blocks greater than 100 acres and between higher value wetlands. These representations are approximate and have not been field verified.

**Undeveloped Block Connectors**

Likely road crossing areas linking undeveloped habitat blocks greater than 100 acres. The threat of habitat fragmentation and animal mortality corresponds to traffic volume.

Yellow lines represent habitat road crossings with daily traffic volumes less than 2000 vehicles per day.

Red lines represent habitat road crossings with daily traffic volumes greater than 2000 vehicles per day.

**Riparian Connectors**

Likely crossing locations for wetland dependent species moving between waterways and wetlands divided by roads

Blue lines represent riparian road crossings with daily traffic volumes less than 2000 vehicles per day.

Purple lines represent riparian road crossings with daily traffic volumes greater than 2000 vehicles per day.

**Highway Bridge Connectors**

Highway bridges along I-95 and I-295 that span riparian habitat connecting adjacent but separated habitat blocks. These are locations where species are likely to take advantage of infrastructure to move between habitat blocks.

**Conserved Lands**

The State of Maine's conserved lands database includes lands in federal, state, and non-profit ownership. It does not include many privately owned conservation lands, especially those protected by local land trusts, or town owned conservation lands. For the most accurate and current information about land ownership, consult with the local assessor and/or other local land management agencies. If public access potential to any of the properties displayed here is uncertain, landowners should be contacted to determine if permission is necessary.

**Ownership Type (transparent layers)**

Federal  
National parks, forests, and wildlife refuges. (Includes Canadian conserved lands.)

State  
Wildlife Management Areas and other properties managed by the Department of Inland Fisheries and Wildlife, state parks, and parcels managed by the Bureau of Parks & Lands.

Municipal  
Town parks, athletic fields, community forests, etc.

Private Conservation  
Properties owned and managed by private (usually non-profit) organizations such as The Nature Conservancy, Maine Coast Heritage Trust, Trust for Public Land, and local land trusts.

Easement  
Voluntary legal agreements that allow landowners to realize economic benefit by permanently restricting the amount and type of future development and other uses on all or part of their property as they continue to own and use it.

**Aerial Imagery**

Aerial imagery is often the best tool available to visualize existing patterns of development and resulting changes in the natural landscape. By depicting undeveloped habitat blocks, habitat connectors and conserved lands with aerial photos, the map user can more easily identify opportunities to expand the size and ecological effectiveness of local conservation efforts.

**Regional Undeveloped Blocks**

Developed Areas

0 - 250 acres

250-500 acres

500-1,000 acres

1,000-5,000 acres

> 5,000 acres

1 : 325,000

1 inch equals 5 miles

**Data Sources**

**DATA SOURCE INFORMATION**

**TOWNSHIP BOUNDARIES**

Maine Office of GIS: *metwp24* (2013)

**ROADS**

Maine Office of GIS, Maine Department of Transportation): *medotpub* (2013)

**HYDROLOGY**

U.S. Geological Survey: *NHD\_Maine* (2012)

**UNDEVELOPED HABITAT BLOCKS, DEVELOPMENT BUFFER, CONNECTORS**

Maine Department of Inland Fisheries and Wildlife

**CONSERVED LANDS**

Bureau of Parks and Land, Land Use Regularity Commission, Department of Inland Fisheries and Wildlife: *conserved\_land*s (2014)

**AERIAL IMAGERY**

U.S. Department of Agriculture: *NAIP 2013* - state-wide 1-meter color orthoimagery

**DATA SOURCE CONTACT INFORMATION**

Maine Office of GIS - <http://www.maine.gov/megis/catalog/>

Maine Natural Areas Program - <http://www.maine.gov/doc/nrc/mc/mnap/>

Maine Dept. of Inland Fisheries & Wildlife - <http://www.maine.gov/ifw/>

Maine Department of Transportation - <http://www.maine.gov/mdot/>

Maine Department of Environmental Protection - <http://www.maine.gov/dep/>

**DIGITAL DATA REQUEST**

To request digital data for a town or organization, visit our website.  
[http://www.beginningwithhabitat.org/the\\_maps/gis\\_data\\_request.html](http://www.beginningwithhabitat.org/the_maps/gis_data_request.html)

5,000  
Feet

2,500  
Meters

0  
0

0.5  
0.5

1  
1

Miles  
Kilometers

Scale: 1:24,000  
Projection: UTM 19N  
Datum: NAD 1983